

St. Paul's Epistle

An Inviting Community of Christ's Disciples

Volume 34, Issue 2

February, 2011

St. Paul's United
Methodist Church

105 E. Main St.
Elida, OH 45807

419-339-3801

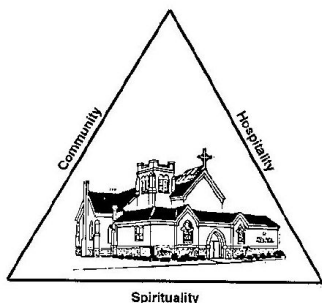
espcoffice@embarqmail.com

Rev. Ruth Solo

419/909-9102

Cell Phone: 419/812-3032

espcpastor@embarqmail.com



Inside this issue:

Youth News	2
Upcoming Events	2
Ten Misconceptions	3
The Heart of Church	4
Faith In Action	5-6
Consulting the Manual	7
Pastor's Message	8
News from the Pews	9
Remember When...	10
Connecting With...	11
The People of St. Paul's	12
February Calendar	13
Recipes	14
Kidz Korner	15
Living Our Faith	16

Dear Friends,

In light of the events in Tucson, AZ in January, it is necessary that we who follow the Prince of Peace reflect upon how we contribute to the discourse of violence and hatred toward our fellow human beings. While the person responsible for shooting Rep. Giffords and others, including the killing of a judge and a 10 year old girl, suffers from a severe mental illness, I believe that the rhetoric that is bantered around, as well as how we express our personal disagreement with public figures can feed the paranoia and distress in people who think and react out of such illness.

On January 11, Rev. Jim Wallis, the editor and publisher of Sojourners Magazine, a Christian magazine dedicated to the causes of Christian social justice, printed a Peace and Civility Pledge. I signed the pledge electronically, but you can, if you agree with it, can sign it for yourself, and put it in a place where you can be reminded each day of your commitment to, as we sing, "let there be peace on earth, and let it begin with me."

Rev. Wallis wrote:

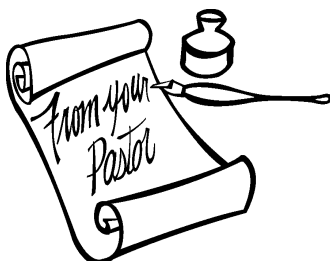
"The horrible shooting of Congresswoman Gabrielle Giffords and others is an important American moment. We [strive to honor this tragic event](#) by reflecting deeply on how we speak to and about one another, and how we create environments that help peace grow — or allow violence and hatred to enter. Our Peace and Civility Pledge outlines the higher standards that scripture calls us to in how we are to treat one another and act in community. I ask you to sign the pledge, consider how these teachings are being manifested in your life, and share it with a friend, your church, and your family.

Peace and Civility Pledge

The church can offer a message of hope and reconciliation to a nation that is hurting and deeply divided. We urge those who claim the name of Christ to "put away from you all bitterness and wrath and anger and wrangling and slander, together with all malice, and be kind to one another, tenderhearted, forgiving one another, as God in Christ has forgiven you" ([Ephesians 4:31-32](#)).

We pledge to God and to each other that we will lead by example in a country where [civil discourse](#) and [peacemaking](#) are rare. We will work to model a better way in how we treat each other in our many communities, across religious and political lines. We will strive to create safe and sacred spaces for

(Continued on page 8)



Thought for the Month:

Blessed are they
who can laugh at
themselves, for they shall
never cease to be amused.

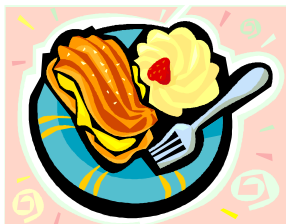


CONGRATULATIONS TO LOGAN SMITH

Logan graduated from Manchester College, Indiana, in December 2010 with a Bachelor's in Education degree. He has moved back to this area while processing his license and getting his credentials in order to begin substitute teaching while looking for a fulltime teaching position and hopefully also a coaching position. Logan will participate in the graduation ceremony with his class in May. Congratulations and employment offers can reach him at 2872 Sherwood Drive, Lima, OH 45805.

St. Paul UMC to Host Next Lima Area Methodist Men's Breakfast:

Men of St. Paul's mark your calendars! The next quarterly **Lima Area Methodist's Men's (LAMM)** breakfast will be at Elida St. Paul's on **Saturday, February 5th, at 8:00 AM**. There will be a signup sheet on the west window of the sanctuary for people to signup to bring food for the breakfast. Come and enjoy a hearty breakfast, enjoy the fellowship of other Christian men and listen to what we can do in mission work around Lima. Bring a friend with you. We hope to see you at the breakfast.



Food Pantry Giving Remains Strong:

Our food pantry giving continues to bless those folks in our Elida area community who are having a tough time feeding their families. The **Five Loaves Food Pantry** is housed in the basement of The Church at Allentown and is supported by three other churches, including St. Paul's. The people of St. Paul's UMC continue to bring food monthly to help feed people in the 45807 zip code area. **We Praise God for your continued support of this mission!**

Upcoming Events for St. Paul's

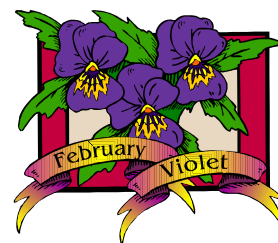
St. Paul's Book Club will meet Saturday, March 5 at 9 a.m. in the Elementary Classroom beside the main office. The book, Three Cups of Tea, will be discussed. Bring your breakfast if you wish and join the group for some interesting conversation. **All are welcome.**



February 27, 2011
Spiritual Gifts Sunday

Upcoming Emmaus Walk Dates:

Have you been on an Emmaus Walk? Some of the men and women in our church have and they will tell you it is an incredible experience, feeling God's love through the fellowship with others during a 3-day Emmaus Walk in either Sidney or Findlay. Below are the dates of upcoming Emmaus Walks in both Sidney and Findlay:



- Findlay Area Women's Walk #82-February 10-13th
- Sidney Area Women's Walk #53-February 24-27th
- Findlay Area Men's Walk #64-March 3-6th
- Sidney Area Men's Walk #49-March 17-20th

If you think you may be interested in attending a walk or want to find out about Emmaus, please contact one of the following persons for more information: Wyants, Sdaos, Bowshers, Pipers, Foxes, Steve Moser, Maedene Holmes, John Fletcher, Mike Matlock or Pastor Ruth.

Newsletter deadline: the **16th** of each month

St. Paul's Epistle	
is published by St. Paul's United Methodist Church	
Editor:	Judy Chaffins
Secretary:	Gail Fessler
Secretary:	Jone Lane
Organist:	Linda Holman
Pianist:	Lois Cook
Youth Director:	Corinne Piper
Custodian:	Dave Decker

Ten Misconceptions about Church Growth

Ten Misconceptions about Church Vitality and Growth

By Eugene A. Blair

The Lewis Center's reporting on American Congregations 2008 (a report about congregational vitality and growth based on the Faith Communities Today Project at Hartford Seminary) brought to mind ten myths that prevent congregations from moving forward. In each case, the research findings reveal a different truth and suggest a new question to reshape your congregational agenda in ways that will position your church for growth. Each myth is followed by the research findings and then a provocative question for you to consider.

Myth Ten: Let's just keep doing the same worship we've done since 1960, and people will surely come.

The truth is there is a relationship between adding a new service and/or contemporary worship and growth. However, the quality of the worship seems to matter the most to newcomers and the unchurched.

When was the last time you changed, revamped, upgraded, or evaluated your worship or added a new worship service?

Myth Nine: We've always done it that way before so let's keep doing it that way. The truth is congregations, whether liberal or conservative, with a clear identity and purpose tend to grow in attendance and spiritual vitality.

Do you have a mission and purpose statement with goals attached?

Myth Eight: Pastor, if you would just get more youth in here, everything will be all right. The truth is that a strong youth ministry, while important, is not in and of itself strongly associated with attendance growth. There is, however, a strong association between youth ministry and spiritual vitality in any congregation.

No matter how many youth you have, what is your plan for youth ministry?

Myth Seven: We're a friendly church, and visitors should know we want them to come back. The truth is it is important to respond systematically to visitors and newcomers using a variety of different methods. The number of different methods used to connect with visitors and newcomers is associated with attendance growth.

What is your plan to connect with newcomers once they arrive on your parking lot until they come home later that day?

Myth Six: It's the pastor's job to get new members. The truth is the more lay members are involved in reaching new people, the greater the attendance growth. Spiritual vitality goes up the more members see themselves as personal evangelists and act like it.

What is your plan to train members to reach out to others?

Myth Five: Our members know we care, so we do not have to call on them to reach out if they are absent. The truth is contacting those who have stopped coming is directly related to attendance growth and spiritual vitality. This is especially true for churches with over 300 in worship.

What is your plan for training lay people to nurture and care for members?

Myth Four: Where two or three are gathered together, there will be conflict and fights, so live with it. The truth is that clear organizational direction and purpose coupled with strong interpersonal relationships will decrease the likelihood of conflict. When purpose and relationships are present, conflict is more easily resolved.

Have you had an open conversation about conflict and how your church will resolve it?

Continued on Page 5

The Heart of Church

Greeters

January 30, 2011	Tim & Sue Theodore
February 6, 2011	Gary & Janet Grigg
February 13, 2011	Jerry & Becky Bean
February 20, 2011	Susan Nartker & Ruth Burgoon
February 27, 2011	OPEN

Nursery Volunteers

January 30	OPEN
February 6	OPEN
February 13	OPEN
February 20	OPEN
February 27	OPEN



Adult Small Group Ministry

St. Paul's offers several small groups for adults to be involved in faith formation, fellowship, and support of one another. These groups were created by the interests of those involved to bring the members together on common grounds. While the groups 'work' on their special interest areas as a part of the fellowship, they are also involved in faith formation studies which bring them closer to God, shaping them in the image of Christ, and challenging them to be servants in the community. If you are interested in participating in one of these groups, please contact the listed facilitator:

ST. PAUL'S SMALL GROUP'S

Group	Facilitator	Meeting time
Men's Bible Study	Art Holman	Sunday morning 9:15 to 10:00 AM
Pastor's Bible Study 3-4 short term studies per yr.	Pastor Ruth	Wednesday evenings 7:30 to 9:00 PM
Women's Bible study	Corinne Piper	Sunday mornings 9:15 to 10:00 AM
Cars	Jamie Wyant	Wednesday evenings at 6:30 PM
Healthy Living	Corinne Piper	Monday evenings 5:00 to 6:00 PM
Quilting/Crocheting "Creative Creatures"	Carole Grapner	Wednesday evenings 6:30 PM

Ten Misconceptions (continued)

Continued from page 3

Myth Three: It's all about money; we just need more money and all our problems will go away. The truth is there is a clear relationship between spiritual vitality and financial health. Before you can increase financial health, you have to elevate the spiritual climate.

What is your plan to increase the spiritual health of the congregation in the next twelve months?

Myth Two: The world is our parish, so we are going to save everyone for Jesus. The truth is attendance growth and spiritual vitality are directly related to being clear and specific about whom you want to reach and why.

Who are our neighbors, what are their needs, and how can we help them?

Myth One: Church growth is a matter of having the ideal pastor. The truth is a team of spirit-led accountable, and committed lay people always trumps whoever the pastor is at any time.

What is your plan to raise-up and train a team for the future of your ministry?

Share these truths with your church's leadership team, ask these key questions, and pray about what God is calling you to do next.

Dr. Eugene A. Blair is district superintendent of the Flint District in the Detroit Conference, United Methodist Church.

"This article is reprinted by permission from Leading Ideas, a free online newsletter of the Lewis Center for Church Leadership of Wesley Theological Seminary and available at www.churchleadership.com."

Praying Together

Thank you for the gift of food.
 Thank you that it tastes so good!
 Bless the gifts we have to share
 with all who need your loving
 care. Amen.

– By Frank Ramirez and Jill Abenth,
 reprinted with permission from
Lectern Resource and Jesus, the Teacher
 © Logos Productions.



Book of Timothy



Committee Chairs

PPR Chair	Linda Craft
Trustees Chair	Tim Theodore
Finance Chair	Art Holman
Physical Plant Chair	Ron Steiner
Treasurer	Gene Craft
Assistant Treasurer	Jenessa Fletcher
Education Chair	To Be Named Later
Administrative Council Chair	Scott Fessler
Worship	Ruth Solo
Nurture	Martha Vazquez
Stewardship	Tim Piper
Missions	Marty White, Maedene Holmes

Faith In Action

Worship Attendance:

December 26, 2010	59
January 2, 2011	91
January 9, 2011	83
January 16, 2011	89
January 23, 2011	84

Financial Giving

Weekly Need for
Unified Ministry Budget
\$3,466.00



Unified Ministry Giving:		Other:
December 26, 2010	\$2,911.00	\$789.91
January 2, 2011	\$4,638.00	\$731.26
January 9, 2011	\$3,413.00	\$2,445.00
January 16, 2011	\$3,957.00	\$1,128.37
January 23, 2011	\$2,314.00	\$448.00



Children and Youth Ministry Attendance

December 26, 2010	N/A
January 2, 2011	2
January 9, 2011	15
January 16, 2011	13
January 23, 2011	6

Flowers:

February 6, 2011	Gary & Janet Grigg
February 13, 2011	OPEN
February 20, 2011	Art & Linda Holman
February 27, 2011	Steve Moser

Visit The United
Methodist Website at:
www.umw.org

Consulting the Manual



The Bible is the greatest example of the whole being greater than its parts.

— Michael Phillips



Consider the Lilies

Mt 6:28

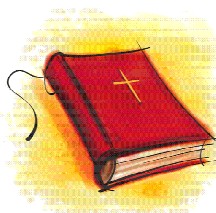
Bible Readings for Revised Common Lectionary Year A

Week of February 6

Color: Green
Old Testament:
 Isaiah 58:1-9a
 Psalm 112:1-10
New Testament:
 1 Corinthians 2:1-12
 Matthew 5:13-20
Preaching Text:
 1 Corinthians 2:1-16

Week of February 13

Color: Green
Old Testament:
 Deuteronomy 30:15-20
 Psalm 119:1-8
New Testament:
 1 Corinthians 3:1-9
 Matthew 5:21-37
Preaching Text:
 Deuteronomy 30:13-20
 Matthew 5:21-37



Week of February 20

Color: Green
Old Testament:
 Leviticus 19:1-2, 9-18
 Psalm 119:33-40
New Testament:
 1 Corinthians 3:10-11, 16-23
 Matthew 5:38-48
Preaching Text:
 Romans 12:3-8
 Matthew 9:35-38

Week of February 27

Color: Green
Old Testament:
 Isaiah 49:8-16a
 Psalm 131 or Psalm 62:5-12
New Testament:
 1 Corinthians 4:1-5
 Matthew 6:24-34
Preaching Text:
 Ephesians 4:7-8, 11-13

For more detailed information on the Revised Common Lectionary, please visit: www.gbod.org

Pastor's Message

common prayer and community discussion as we come together to seek God's will for our nation and our world.

1. We believe Jesus' teaching that "Blessed are those who make peace" ([Matthew 5:9](#)). We acknowledge that most of us have been guilty of violence in our hearts and with our tongues. We hold ourselves to the higher standard to which Christ called us: to refrain from [not only physical violence](#) but violence of the heart and tongue. "Do not commit murder. Anyone who murders will be judged for it," and "Do not be angry with your brother or sister" ([Matthew 5:22-23](#)).

2. We commit that our dialogue with each other will reflect the spirit of the scriptures, which tell us, in relating to each other, to be "quick to listen, slow to speak, and slow to become angry" ([James 1:19](#)).

3. We believe that each of us, and our fellow human beings, are created in the image of God. This belief should be reflected in the honor and respect we show to each other, particularly in how we speak. "With the tongue we bless the Lord and [Creator], and with it we curse those who are made in the likeness of God ... this ought not to be so" ([James 3:9-10](#)).

4. We pledge that when we disagree, [we will do so respectfully](#), without falsely impugning the other's motives, attacking the other's character, or questioning the other's faith. We will be mindful of our language, being neither arrogant nor boastful in our beliefs as we

strive to "be completely humble and gentle; be patient, bearing with one another in love" ([Ephesians 4:2](#)).

5. We recognize that we cannot function together as citizens of the same community, whether local or national, unless we are mindful of how we treat each other. Each of us must therefore "put off falsehood and speak truthfully to his neighbor, for we are all members of one body" ([Ephesians 4:25](#)).

6. We commit to pray for our political leaders — those with whom we agree or disagree. "I urge that supplications, prayers, intercessions, and thanksgivings be made — for kings and all who are in high positions" ([1 Timothy 2:1-2](#)).

7. We believe that it is more difficult to hate others, even adversaries and enemies, when we are praying for them. We commit to pray for each other, those with whom we agree and those with whom we may disagree, so that we may be faithful witnesses to our Lord, who prayed "that they may be one" ([John 17:22](#)).

If we are to follow Jesus, we who are the body of Christ, must commit ourselves to live and walk the way Jesus showed us, and that scripture supports. Let there be peace, and let it begin with each one of us.

May you be blessed.

*Peace,
Pastor Ruth*



To love is to suffer. To avoid suffering one must not love. But then one suffers from not loving. Therefore to love is to suffer, not to love is to suffer. To suffer is to suffer. To be happy is to love. To be happy then is to suffer. But suffering makes one unhappy. Therefore, to be unhappy one must love, or love to suffer, or suffer from too much happiness. I hope you're getting this down.

– Woody Allen



News from the Pews

As a member of the Conference Board of Ministries {BOM}, I must venture to the Conference Center in Columbus for meetings throughout the year. The last meeting focused upon statistics of one kind and another concerning the churches in our conference. Of the many items that were reported to us, one detail jumped out at me. The statement was made that it takes 150 giving people to fully support an ordained minister. It occurred to me how well our congregation is doing and how generous all of you are as we continue to fully support an ordained elder. As the budget update article in January's newsletter indicated, the people of St. Paul's Church continue to be generous, committed and faithful in these uncertain financial times.

Another upcoming event is the annual March interviews for persons completing all of the criteria for becoming an ordained minister. Please keep the interview teams in prayer as we begin the process of being trained in preparation for this responsibility.

Thank you, Linda Craft



ARE WE WANDERING IN THE DESERT?

This morning I woke up with this thought in my mind. Is there a parallel between our church and the Children of Israel in the story of the exodus from Egypt? Have we been wandering around in the wilderness, sustained by manna from God but not completely trusting in him? When Moses sent out scouts, to report on the promised land, some were fearful and reported that although the land was plentiful the people were descended from giants and too fierce to be overcome. But when the remnant went into Canaan, God gave them the tools and was with them and they prospered,

In the 'MESSAGE' the beginning of the introduction to Leviticus it says; "One of the stubbornly enduring habits of the human race is to insist on domesticating God. We are determined to tame him. We figure out ways to harness God to our projects. We try to reduce God to a size that conveniently fits our plans and ambitions and tastes. But the Scriptures are even more stubborn in telling us that we can't do it. God cannot be fit into our plans, we must fit into his. We can't use God – God is not a tool or appliance or credit card.

The people were given instructions through Moses, led to and in the promised land.[In my parallel thinking I ask] Are we ready to step out and go into our promised land?

As Pastor Ruth has brought out in her messages, we need to look outward. Look outside our church doors and into the mission field around us. Through the Refocus process, we want to look back at our past. Ponder where we have been, Pray and listen for God's will and direction. Prayerfully listen to the 'scouts' of our church who have went into the community around us to see how we can serve our God in our community.

In the scripture read in service Jan 16 we heard the message from Matthew 9; 35-38. In the "MESSAGE" bible this scripture is written in this form. " *Then Jesus made a circuit of all the towns and villages. He taught in their meeting places, reported kingdom news, and healed their diseased bodies, healed their bruised and hurt lives. When he looked out over the crowds, his heart broke. So confused and aimless they were, like sheep with no shepherd. "What a huge harvest" he said to his disciples. "How few workers! On your knees and pray for harvest hands."*

I felt moved to try to put down my waking thoughts and pray that I am listening to the prompting of God in doing so. ***In prayer for our Church. Lavonne***

Remember When...

CELEBRATIONS



1990

Lois Rabley presents Rev. Allen Puffenberger with balloons on his birthday as he celebrates with St. Paul's congregation.

February, 1993

Rev. Eric McGlade celebrates his 41st birthday with St. Paul's congregation



1995

Choir Director Todd Hanes celebrates being named the Elida Schools Superintendent with the Chancel Choir



Visit The United Methodist Communications website : www.umcom.org

This website offers book reviews, music reviews, and web ministry information among other relevant and interesting links.

Connecting With ...

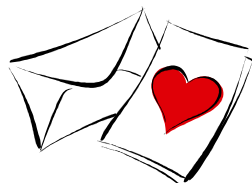


Pastor Ruth receives a check for \$159.00 from Domenick Stoner, manager of the Bob Evans Restaurant on Cable Rd. St. Paul's participated in the Bob Evans Community Fun Night on November 1, 2010, as a fundraiser for our sanctuary technology fund. A second Bob Evans Fun Night was scheduled for January 27th. Watch the March newsletter for the results.

Remember our homebound members with a note or card on Valentine's Day!



- | | |
|-------------------------------------------------------------------------------|-------------------------------------------------------------------------------------------|
| Hazel Dunn
Lima Manor
750 Brower Rd.
Lima, OPH 45801 | Edna Osmon
Otterbein Ret. Center
100 Red Oak Dr. Rm. #312
Cridersville, OH 45806 |
| Jean Redd
Otterbein Ret. Ctr.
107 Red Oak Dr.
Cridersville, OH 45806 | Gladys Sherrick
Putnam Acres Care Ctr.
10170 Road 5H
Ottawa, OH 45875 |
| Helen Scholfield
709 Wildwood Ave.
Elida, OH 45807 | Mary Steiner
302 N. Greenlawn Ave.
Elida, OH 45807 |




Remember in Prayer

Recovering from Surgery or in the Hospital

- Mary Kaye Pease
- Mary Steiner
- Phyllis Trigg
- Jone Lane

Homebound Members

- Hazel Dunn
- Edna Osman
- Jean Redd
- Helen Scholfield
- Gladys Sherrick
- Mary Steiner

Those in Need of Healing, Support, Strength & Encouragement

- Joanna Hurd
- Rodney Lee
- Rick Scholfield

In the Military & Missions

- Lesley Parker
- Jason Stanley

Thank you to our church family and Pastor Ruth, for the phone calls, prayers, visits, cards and food after the passing of my Dad, Wayne Johnston. It's great to have a loving caring church family.
Love in Christ,
Mary and Don Irvin

The People of St. Paul's

Dear Friends,

Thank you for the wonderful dinner you served us after my mother's service. The church was so important to her and it would have made her so happy to think her family was together in the place she held so dear. Everything was just delicious and made with love.

Thanks again for your generosity.

Family of Helen Waldron

Thank you to all who donated to St. Paul's hat/mitten tree for Christmas, 2010. On December 22, 22 pairs of gloves, 17 scarves, and 14 hats were shared evenly between the Samaritan House and the Lima Salvation Army as distributed by the St. Paul's Missions Committee.



To St. Paul's UMC,
Thank you for giving Bob Evans an opportunity to serve you with a Community Fun Day!
Diane Bloom

A **big thank you** to the following young people who participated in the dramatization on Christmas Eve. Your help made the Gospel reading much more meaningful.

- Stacie Alexander**
- Oliver Fessler**
- Joshua Guess**
- Alex McAdams**
- Reggie McAdams**
- Tori McAdams**
- Tahler Sdao**
- Michele Theodore**

Thanks to all,

Finally on Dec 3rd Mary had her right knee replaced. The doctors were all concerned that it was on her weak side. She is getting along really well. She is walking fairly well, but being her weak side, she is still scared about walking. It will take her awhile to get her confidence back. We would like to thank all of you that sent cards, flowers, came to visit and for all the prayers that were raised up for Mary.

A special thanks to Pastor Ruth for the visits at home and in the hospital, you always had comforting words for us both. We were blessed with Mary's sister, Shirley Moser. She was a God-send to both of us. She helped Mary in the mornings and is still taking Mary to therapy. We are truly blessed to have her as a family member.

We are truly blessed with all of you that have helped us.

Thanks to all,
Ron & Mary Steiner

We extend our sympathy to **Tony and Pam Lozano** on the death of Tony's father, **Romie Lozano**. Mr. Lozano died December 28, 2010, and his funeral service was held on January 3, 2011 in Delphos. Cards may reach **Tony and Pam** at 503 W. Fourth St., Delphos, OH. 45833.



In Sympathy

We extend our sympathy to **Mary and Don Irvin** on the death of Mary's father, **Wayne Johnston**. Mr. Johnston died January 6, 2011, after a long battle with cancer. His funeral service was held January 8th at North Creek UMC. Cards may reach **Don and Mary** at 4878 Pheasant Street, Elida, OH 45807.

To St. Paul's UMC,
Thank you for those who sat quietly and prayed, for those who sent cards and flowers and for those who visited the funeral home while we mourned the passing of my father. It was all so comforting.
We were truly touched
Thank You!
Tony and Pam Lozano

Prayer List

Updates

Please Contact

Lavonne Segovia



Meetings

February 1, 2011
Trustees...7:00 PM

February 2, 2011
Worship team.6:00 PM
Stewardship...7:00 PM

February 7, 2011
PPR...7:15 PM

February 14, 2011
Finance...7:00 PM

No Ad Council

February 15, 2011
Missions...7:00 PM

Sundays
Prayer...10:00 AM
Fellowship and
Welcome Center... 10:00 AM
Worship...10:30 AM

Thursdays
Chancel Choir...7:30

February 2011

January 2011						
S	M	T	W	T	F	S
						1
2	3	4	5	6	7	8
9	10	11	12	13	14	15
16	17	18	19	20	21	22
23	24	25	26	27	28	29
30	31					

Sun	Mon	Tue	Wed	Thu	Fri	Sat
		1	2	3	4	5
			Barbara Schade Megan Bible Worship Stewardship	Braylon Kimmet	Cyndi Smith	Don Irvin
6	7	8	9	10	11	12
	PPR					
13	14	15	16	17	18	19
	Finance	Missions		Gladys Sherrick Doug Fox	Sydney Lane	
20	21	22	23	24	25	26
Fran Hall Ron Steiner	Mary Kaye Pease Eleanor Klingler	Andrew Piper			John Foster	Addison Chaffins
27	28					
	Kate Stengel Makayla Adkins					

Anniversaries

Jerry & Becky Bean
 February 14
 52 yrs.

Gary & Janet Grigg
 February 18
 45 yrs.

Jim & Phyllis Hines
 February 23
 54 yrs.

Gene & Linda Craft
 February 25
 44 yrs.

Larry & Shirley Moser
 February 28
 40 yrs.

February 2011						
S	M	T	W	T	F	S
		1	2	3	4	5
6	7	8	9	10	11	12
13	14	15	16	17	18	19
20	21	22	23	24	25	26
27	28					

Special Recipes from St. Paul's Great Cooks

Chocolate Chip Pudding Cookies

by Linda Matlock

Ingredients		Instructions
2 1/4 cups	flour	Preheat oven to 375 degrees. Mix flour with baking soda. Combine butter, sugars, pudding mix, and vanilla in large bowl; beat until smooth and creamy. Beat in eggs. Gradually add flour mixture, then stir in chocolate chips and nuts. Drop by spoon onto ungreased baking sheet about 2 inches apart. Bake for 8-10 minutes.
1 tsp.	baking soda	
1 cup	butter or margarine	
1/4 cup	sugar	
3/4 cup	firmly packed brown sugar	
1 pkg.	vanilla or chocolate instant pudding	
1 tsp.	vanilla	
2	eggs	
1 (12 oz.) pkg.	chocolate chips	
1 cup	chopped nuts, optional	



Hamburger Pie

by Jan Wyant

Ingredients		Instructions
1 lb.	ground beef	Preheat oven to 350 degrees. Mix all ingredients, except cheese and potatoes. Spread in ungreased 9" pie plate. Bake uncovered for 35-40 minutes. Top with mashed potatoes; sprinkle with cheese. Bake 3-4 minutes longer or until cheese melts.
1 1/3 cup	oatmeal or dry cracker crumbs	
1	egg	
1 tsp.	salt	
1/8 tsp.	pepper	
1 Tbl.	minced onion	
1/4 cup	catsup or BBQ sauce (depending on how spicy you want the meat)	
1 cup	milk	
1/2-1 cup	shredded cheese	
2-3 cups	mashed potatoes	



KIDZ KORNER

Heart Word Find

Look up these Bible verses to find the kind of heart. Then find that word in the word find.

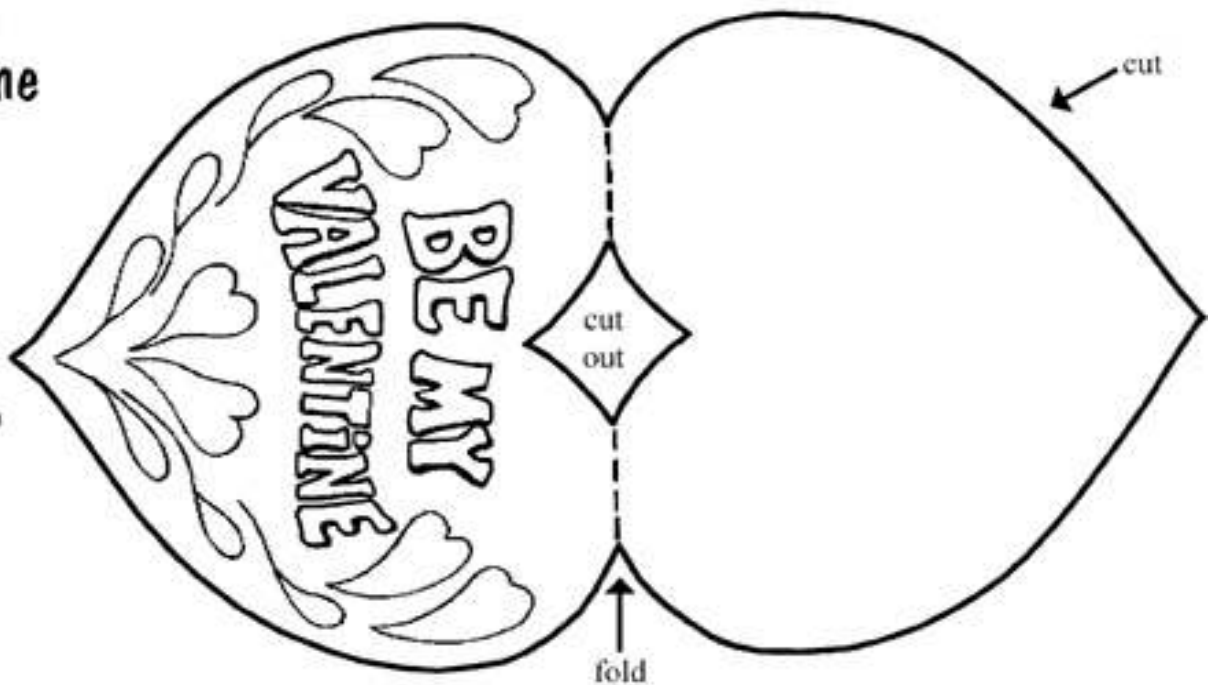
- Exodus 35:5 G _____
- Numbers 32:9 D _____
- Deuteronomy 28:47 G _____
- Deuteronomy 28:65 T _____
- 1 Samuel 25:36 M _____
- Nehemiah 2:2 S _____
- Psalms 12:2 D _____
- Psalms 34:18 B _____
- Psalms 101:5 A _____
- Proverbs 10:8 W _____
- Proverbs 17:22 C _____
- Proverbs 25:20 H _____
- Isaiah 35:4 F _____
- Jeremiah 17:9 D _____
- Jeremiah 17:9 P _____
- Ezekiel 18:31 N _____
- Matthew 5:8 P _____
- Luke 8:15 G _____
- Hebrews 3:12 E _____
- Hebrews 3:12 U _____

	A	R	I	E		B	S	J	C										
S	D	O	U	B	L	E	K	D	S	S	E	N	D	A	S				
X	C	B	U	L	D	L	A	A	T	C	E	C	T	B	E	M	G	F	V
P	G	N	I	L	B	M	E	R	T	Y	H	F	W	H	W	D	S	I	H
G	F	V	E	Q	H	N	G	E	R	I	D	E	V	I	O	U	S	J	I
K	E	D	R	F	O	L	V	R	K	O	E	O	E	M	J	X	E	K	N
C	U	N	B	E	L	I	E	V	I	N	G	F	P	R	J	G	N	Y	Q
X	O	S	M	A	E	M	R	N	P	O	A	A	L	O	F	Z	D	R	U
I	S	B	R	O	K	E	N	O	Z	R	T	N	H	M	U	A	X		
B	J	U	F	A	T	U	D	K	A	U	B	Y	T	L	V	L	C		
P	N	U	L	G	E	N	E	R	O	U	S	W	U	Y	G				
W	L	D	N	X	W	O	E	C	E	V	M	V	P						
X	P	E	R	V	E	R	S	E	Y	A	W								
V	O	Y	U	Q	I	P	E												
G	Z	W	Z	D	H														
H	Q	A	S																
R	T																		

Answers: Exodus: Encouraged; Numbers: Encouraged; Deuteronomy: Encouraged; 1 Samuel: Encouraged; Nehemiah: Encouraged; Psalms: Encouraged; Proverbs: Encouraged; Isaiah: Encouraged; Jeremiah: Encouraged; Ezekiel: Encouraged; Matthew: Encouraged; Luke: Encouraged; Hebrews: Encouraged.

Make a Valentine

1. Cut on solid lines.
2. Fold on dotted lines.
3. Color valentine.
4. Write a message on the inside.



St. Paul's United Methodist Church

105 E. Main St.
Elida, OH 45807

*Return Service Requested

Our Web Address:
www.elidastpaulschurch.org

Non-Profit
Organization
U.S. Postage
PAID
Elida, OH
45807
Permit No. 71

February 2011



Living Our Faith



You Are Salt!

Imagine what would happen to your teeth if you ate rocks. Would that be good for you? Actually, there is one rock that we all eat; it's called salt! Sprinkle a few grains of salt in your hand and study each one. If you have a magnifying glass, use it to get a closer look.

Salt is primarily found underground in rock form. It is dissolved in the world's oceans and in some lakes. Salt is also found on the surface of ancient evaporated sea beds.

We use salt to bring out the flavor in some foods. Salt is also used to preserve foods like pickles, cheese, ham, and fish. Where there are no

refrigerators or freezers, salt helps preserve food so it can be eaten later.

Salt helps our bodies process many different chemicals. For a long time the big danger for people was not getting enough salt. Until a century ago, salt was very expensive. It was so valuable people used salt as money. People carried salt hundreds or even thousands of miles to help make things. Nowadays it can be easy to eat too much salt because it is very inexpensive and we have gotten used to putting lots of it on our foods.

Jesus talks about salt in Matthew 5:13. He says to us, "You are the salt of the earth." Have you ever wondered what that means?

Salt Quiz

Jesus says we are salt for the earth, he means that we are so important to life that without us, the world wouldn't be the same. Take this True or False quiz about salt and see what you can learn about salt.

1. Every cell of your body naturally contains salt.
2. Salt preserved Egyptian mummies.
3. Until relatively recently, salt bars were the main type of money in Ethiopia.
4. The word *salary*, meaning the money that we earn for work, comes from the Roman times when soldiers were given an allowance to buy salt.
5. Salt is used in making soap, glass, and pottery.

(All of these statements are true!)